



# RBBP5 mouse mAb

<b>Catalog No</b>	YP-Ab-03477
<b>Isotype</b>	IgG
<b>Reactivity</b>	Human;Mouse;Rat
<b>Applications</b>	WB;IF
<b>Gene Name</b>	rbbp5
<b>Protein Name</b>	
<b>Immunogen</b>	Purified recombinant human RBBP5 protein fragments expressed in E.coli.
<b>Specificity</b>	This antibody detects endogenous levels of RBBP5 and does not cross-react with related proteins.
<b>Formulation</b>	Liquid in PBS containing 50% glycerol, 0.5% BSA and 0.02% sodium azide.
<b>Source</b>	Monoclonal, Mouse
<b>Purification</b>	The antibody was affinity-purified from mouse ascites by affinity-chromatography using epitope-specific immunogen.
<b>Dilution</b>	wb dilution 1:1000 icc dilution 1:100. IF 1:50-200
<b>Concentration</b>	1 mg/ml
<b>Purity</b>	≥90%
<b>Storage Stability</b>	-20°C/1 year
<b>Synonyms</b>	RBBP 5; RBBP-5; RBBP5; RBBP5_HUMAN; RBQ 3; RBQ3; Retinoblastoma binding protein 5; Retinoblastoma binding protein RBQ3; Retinoblastoma binding protein5; Retinoblastoma-binding protein 5; Retinoblastoma-binding protein RBQ-3; SWD1; SWD1, Set1c WD40 repeat protein, homolog.
<b>Observed Band</b>	70kD
<b>Cell Pathway</b>	Nucleus .
<b>Tissue Specificity</b>	Ubiquitously expressed.
<b>Function</b>	function: Binds preferentially to underphosphorylated retinoblastoma protein.,PTM: Phosphorylated upon DNA damage, probably by ATM or ATR.,similarity: Contains 6 WD repeats.,subunit: Component of the SET1 complex, at least composed of the catalytic subunit (SETD1A or SETD1B), WDR5, WDR82, RBBP5, ASH2/ASH2L and CXXC1/CFP1. Component of MLL-containing complexes (named MLL, ASCOM, MLL2/MLL3 or MLL3/MLL4 complex): at least composed ASH2L, RBBP5, DPY30, WDR5, one or several histone methyltransferases (MLL, MLL2, MLL3 and/or MLL4), and the facultative components MEN1, HCFC1, HCFC2, NCOA6, KDM6A, PAXIP1/PTIP and C16orf53/PA1.,tissue specificity: Ubiquitously expressed.,



### Background

This gene encodes a ubiquitously expressed nuclear protein which belongs to a highly conserved subfamily of WD-repeat proteins. The encoded protein binds directly to retinoblastoma protein, which regulates cell proliferation. It interacts preferentially with the underphosphorylated retinoblastoma protein via the E1A-binding pocket B. Three alternatively spliced transcript variants that encode different protein isoforms have been described for this gene. [provided by RefSeq, Jul 2010],

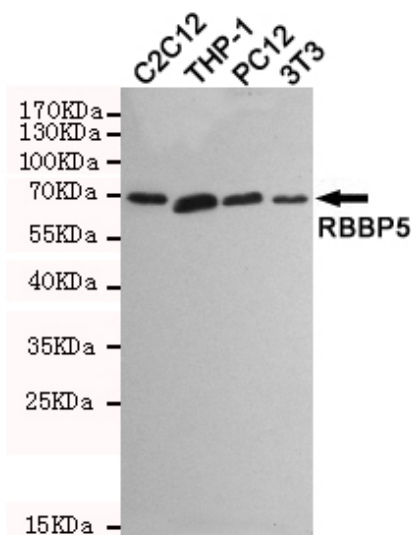
### matters needing attention

Avoid repeated freezing and thawing!

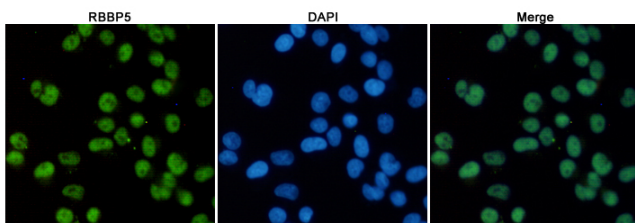
### Usage suggestions

This product can be used in immunological reaction related experiments. For more information, please consult technical personnel.

## Products Images



Western blot detection of RBBP5 in C2C12, THP-1, PC12 and 3T3 cell lysates using RBBP5 mouse mAb (1:1000 diluted). Predicted band size: 70kDa. Observed band size: 70kDa.



Immunofluorescent analysis of HeLa cells fixed with 4% Paraformaldehyde and using anti-RBBP5 mouse mAb (dilution 1:100). DAPI was used to stain nucleus (blue).